

# Sagelands Heritage Program

Restoring and connecting Inland Northwest shrub-steppe for wildlife and people

## Okanagan Mountain to Kalamalka Lake



This narrow band of grasslands in a distinct valley east of the town of Kelowna, British Columbia, is a funnel for north-south wildlife movement as well as critical habitat for badgers. Development and conversion to agriculture threaten this linkage.

## Transboundary Okanogan Valley



An area important for multiple species including bighorn sheep that widens as it extends south. A proposed Canadian national park reserve would protect core habitat, while the Sinlahekin Wildlife Area and state natural areas conserve wildlands on the U.S. side.

## Working for Wildlife Initiative

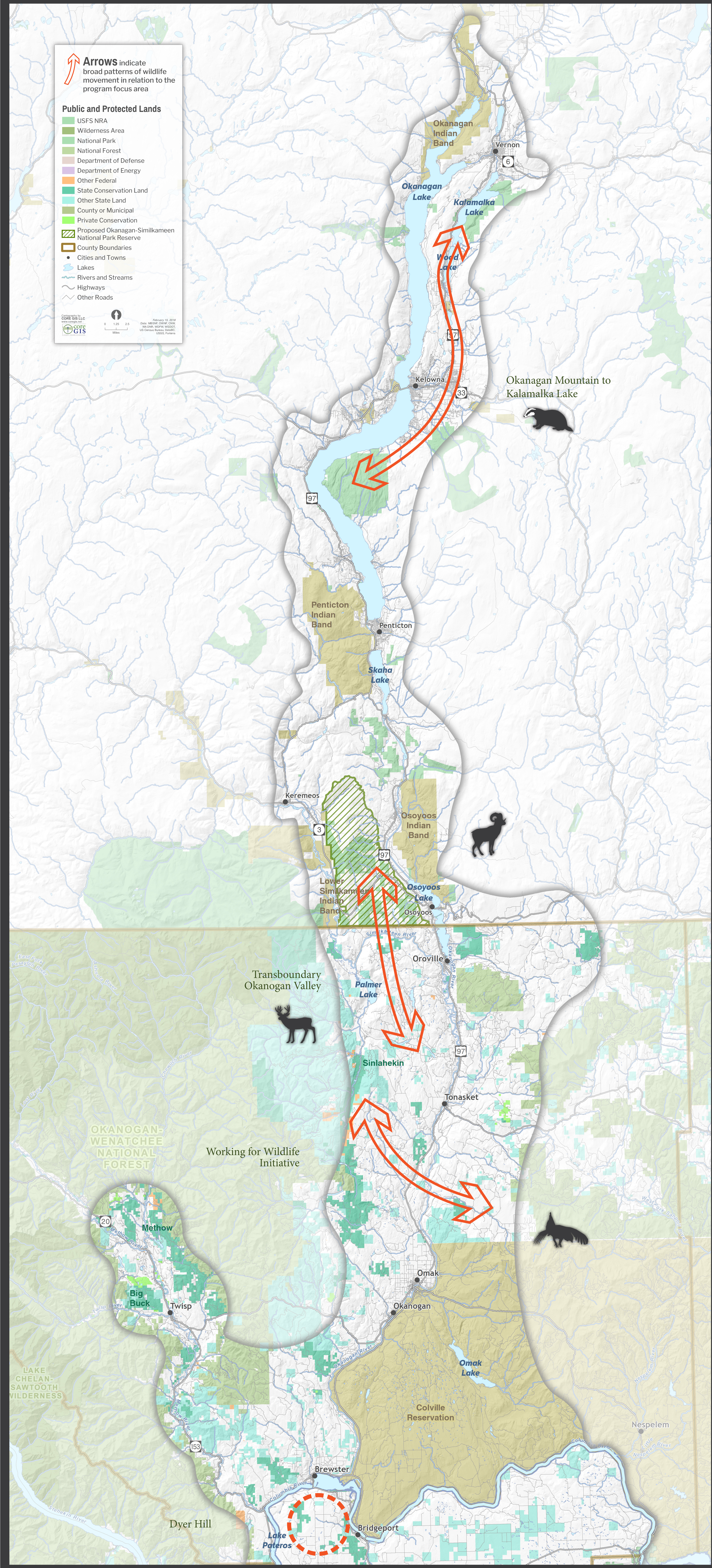


A narrow linkage through the Okanogan Valley between the North Cascades to the west and the Colville Reservation and Kettle Range to the east. Partners are engaged in conservation easements, wildlife crossings, road restoration and maintaining working lands to support sharp-tailed grouse and the largest mule deer herd in the state.

## Dyer Hill



South of the Columbia River is the high plateau of mixed farmland and shrub-steppe habitat of Dyer Hill, where patches of sharp-tailed and sage grouse habitat vital to these species survival in Washington need to be maintained, restored and expanded.



For more information, visit [conservationnw.org/sagelands](http://conservationnw.org/sagelands)

DISCLAIMER: L'usage de ce site est à titre informatif seulement. Nous ne sommes pas responsables des dommages matériels ou corporels résultant de l'utilisation de ce site. Les informations contenues sur ce site ne constituent pas une recommandation, une offre ou une sollicitation de services financiers. Les investisseurs doivent effectuer leurs propres recherches et consulter un conseiller financier avant de prendre toute décision d'investissement. Les données sont fournies en l'état. Aucune garantie n'est donnée quant à l'exactitude, l'exhaustivité ou l'actualité des informations. Les données sont fournies en l'état. Aucune garantie n'est donnée quant à l'exactitude, l'exhaustivité ou l'actualité des informations.