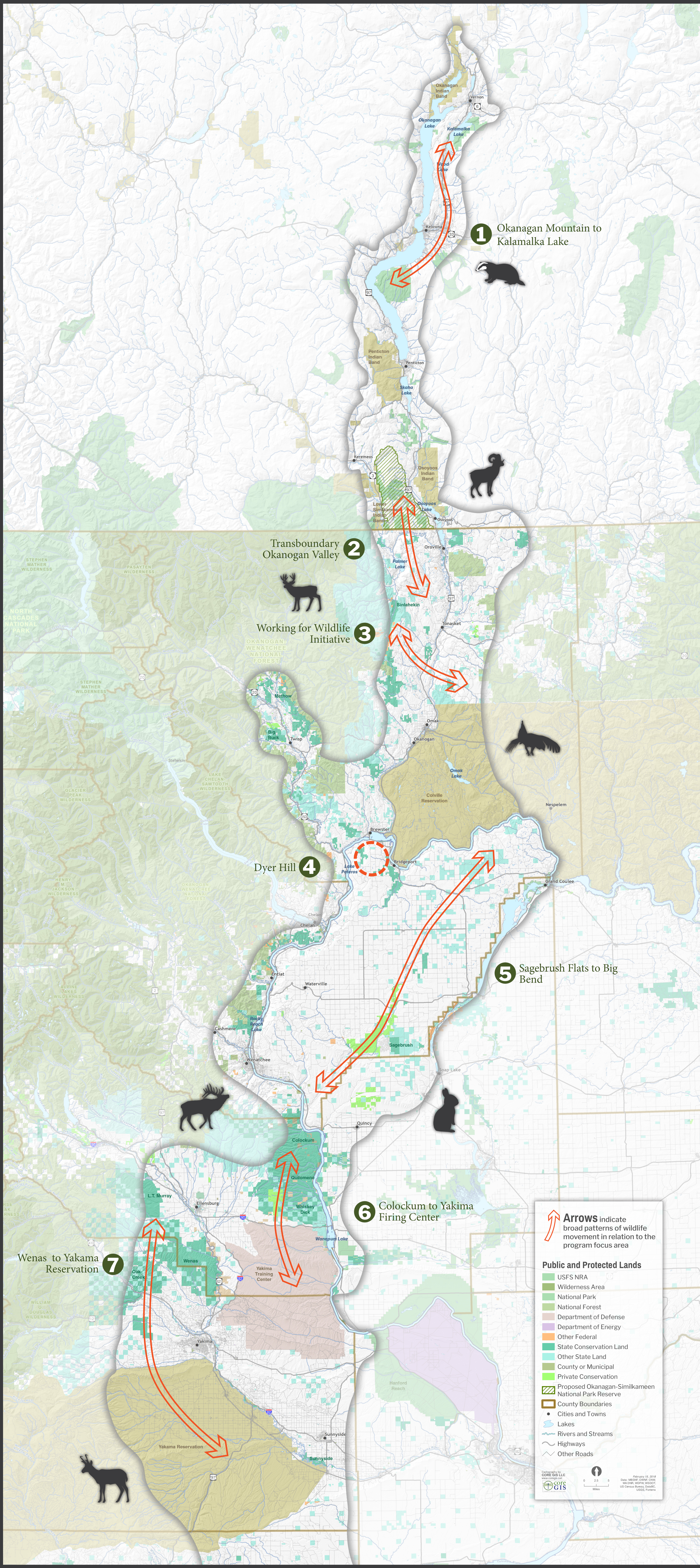


Sagelands Heritage Program

Restoring and connecting Inland Northwest shrub-steppe for wildlife and people

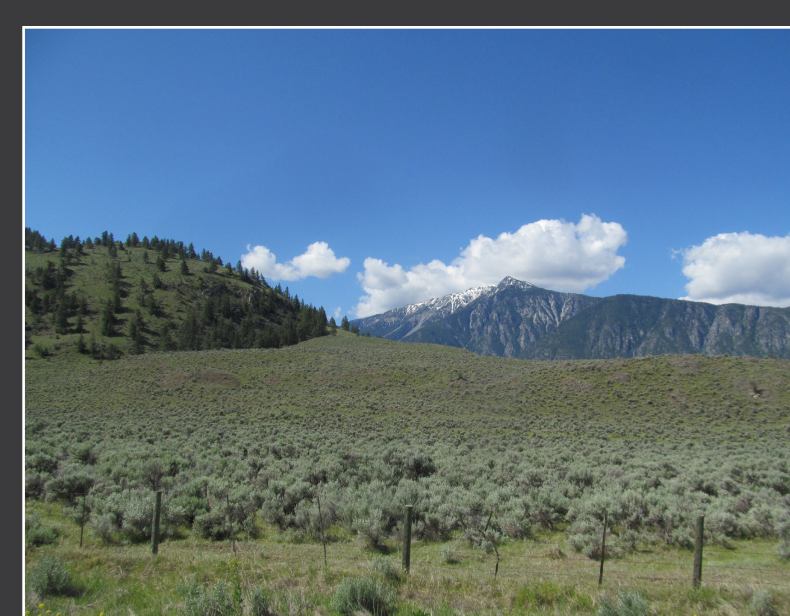


1 Okanagan Mountain to Kalamalka Lake



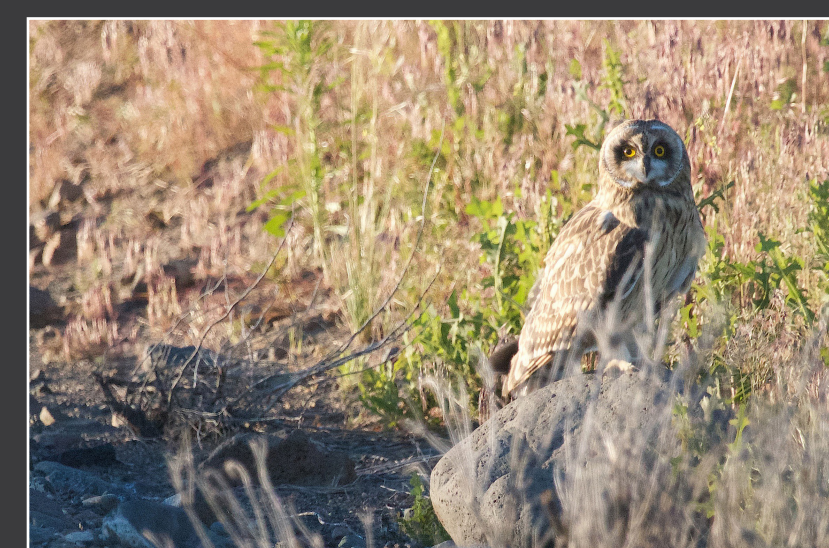
This narrow band of grasslands in a distinct valley east of the town of Kelowna, British Columbia is a funnel for north-south wildlife movement as well as critical habitat for badgers. Development and conversion to agriculture threaten this linkage.

2 Transboundary Okanagan Valley



An area important for multiple species including bighorn sheep that widens as it extends south. A proposed Canadian national park reserve would protect core habitat, while the Simlahakin Wildlife Area and state natural areas conserve wildlands on the U.S. side.

3 Working for Wildlife Initiative



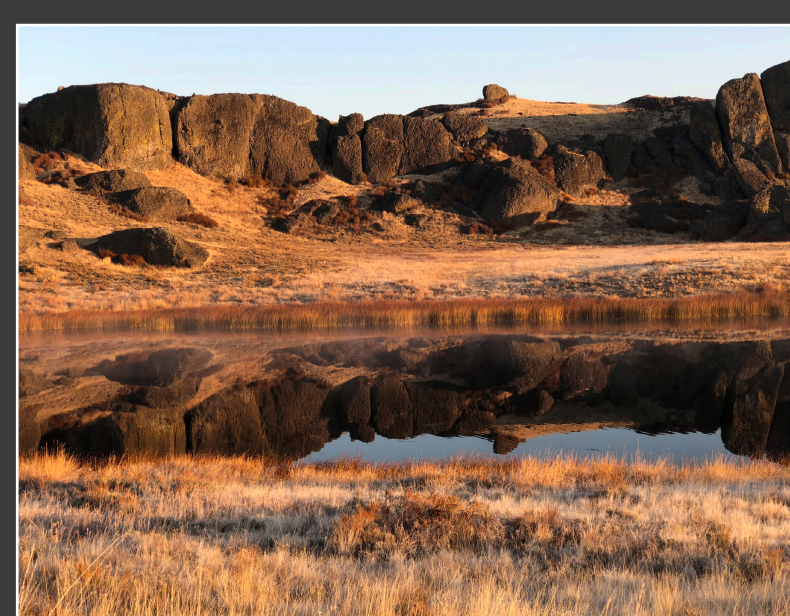
A narrow linkage through the Okanagan Valley between the North Cascades to the west and the Colville Reservation and Kettle Range to the east. Partners are engaged in conservation easements, wildlife crossings, road restoration and maintaining working lands to support sharp-tailed grouse and the largest mule deer herd in the state.

4 Dyer Hill



South of the Columbia River is the high plateau of mixed farmland and shrub-steppe habitat of Dyer Hill, where patches of sharp-tailed and sage grouse habitat vital to these species survival in Washington need to be maintained, restored and expanded.

5 Sagebrush Flats to Big Bend



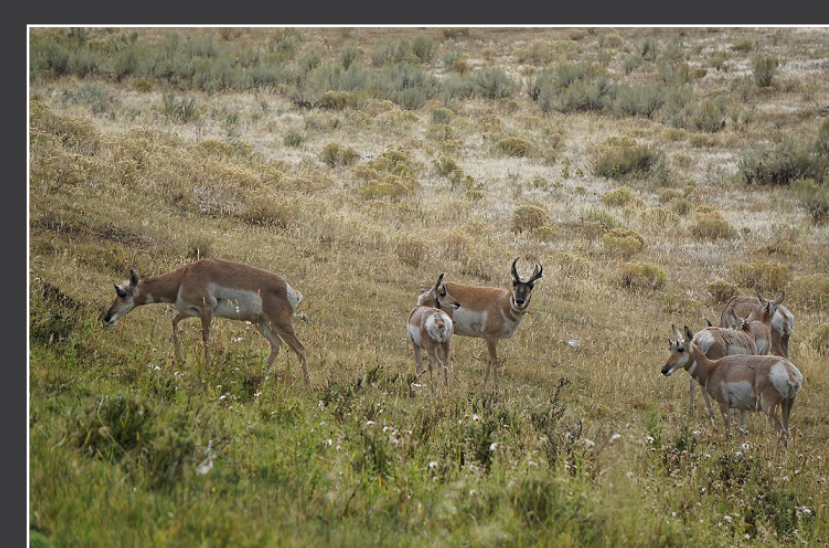
This area has a high number of focal species including mule deer, pronghorn antelope, pygmy rabbits, sage and sharp-tailed grouse and horny toads, and is critical to the integrity of regional habitat linkages. A mix of native habitat, agricultural lands and wetlands with a need for protection, restoration and connections.

6 Colockum to Yakima Firing Center



State wildlife areas and the Yakima Training Center serve as critical winter and calving habitat for elk and mule deer while providing excellent connecting habitat for sage grouse. This linkage is bisected by I-90, a formidable barrier to many wildlife species.

7 Wenas to Yakama Reservation



The Yakama Nation and key state wildlife areas form a vast expanse of shrub-steppe habitat that is under pressure from increasing wildfires, feral horses and development.



For more information, visit conservationnw.org/sagelands

DISCLAIMER: L'usage de ce site et des données associées est interdit sans autorisation écrite. Toute réimpression ou utilisation non autorisée sans la permission écrite de la Conservation Northwest est formellement interdite. Toute réimpression ou utilisation non autorisée sans la permission écrite de la Conservation Northwest est formellement interdite. Toute réimpression ou utilisation non autorisée sans la permission écrite de la Conservation Northwest est formellement interdite.